

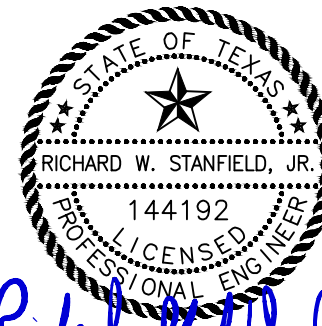
BID TABULATION FOR:

BID OPENING DATE:
BID OPENING LOCATION:
TABULATION BY:
TABULATION DATE:
LJA JOB NO.

CONSTRUCTION OF THE WATER, SANITARY SEWER, AND DRAINAGE FACILITIES TO SERVE SIENNA LAKES DRIVE STREET DEDICATION
TO SERVE SIENNA LAKES DRIVE STREET DEDICATION
SIENNA MUNICIPAL UTILITY DISTRICT NO. 7
CITY OF MISSOURI CITY, FORT BEND COUNTY, TEXAS
FEBRUARY 8, 2024
LJA ENGINEERING, INC.
C CORTEZ
FEBRUARY 8, 2024
1417-1601A (9.2)

BIDDER'S NAME	TOTAL AMOUNT BID	BID INCLUDING ALTERNATE BID NO. 1 - WS&D FIELD CONDITIONS ITEMS
1) CROSTEX CONSTRUCTION INC.	\$3,400,000.00	\$3,559,752.00
2) DIMAS BROS. CONSTRUCTION	\$3,540,678.99	\$3,699,330.99
3) ISJ UNDERGROUND UTILITIES	\$3,666,712.80	\$3,825,364.80

CALENDAR DAYS 100/110



Richard Stanfield Jr
2/9/2024

I, RICHARD STANFIELD, P.E., hereby certify these bid tabulations to be true and correct.

BID TABULATION FOR:

BID OPENING DATE:
BID OPENING LOCATION:
TABULATION BY:
TABULATION DATE:
LJA JOB NO.

CONSTRUCTION OF THE WATER, SANITARY SEWER, AND DRAINAGE FACILITIES TO SERVE SIENNA LAKES DRIVE STREET DEDICATION
 TO SERVE SIENNA LAKES DRIVE STREET DEDICATION
 SIENNA MUNICIPAL UTILITY DISTRICT NO. 7
 CITY OF MISSOURI CITY, FORT BEND COUNTY, TEXAS
 FEBRUARY 8, 2024
 LJA ENGINEERING, INC.
 C CORTEZ
 FEBRUARY 8, 2024
 1417-1601A (9.2)

				1) CROSTEX CONSTRUCTION INC.		2) DIMAS BROS. CONSTRUCTION		3) ISJ UNDERGROUND UTILITIES	
ITEM	DESCRIPTION	UNIT	QTY	UNIT COST	TOTAL COST	UNIT COST	TOTAL COST	UNIT COST	TOTAL COST
WATER DISTRIBUTION SYSTEM ITEMS – SIENNA MUD NO. 7									
1	METHOD "A" CONSTRUCTION STAKING BY THE CONTRACTOR PER GENE BAKER, GBI PARTNERS, LP, 281.499.4539, COMPLETE IN PLACE	LS	1	\$29,500.00	\$29,500.00	\$26,600.00	\$26,600.00	\$26,600.00	\$26,600.00
2	8" PVC WATER LINE, C-900, DR 18, CL 235, ALL DEPTHS, COMPLETE IN PLACE	LF	301	\$38.00	\$11,438.00	\$48.00	\$14,448.00	\$35.50	\$10,685.50
3	12" PVC WATER LINE, C-900, DR 18, CL 235, ALL DEPTHS, COMPLETE IN PLACE	LF	3620	\$68.00	\$246,160.00	\$75.00	\$271,500.00	\$77.00	\$278,740.00
4	24" PVC ENCASEMENT FOR 12" WATERLINE, EXCLUDES CARRIER PIPE, ALL DEPTHS, COMPLETE IN PLACE	LF	480	\$180.00	\$86,400.00	\$150.00	\$72,000.00	\$188.00	\$90,240.00
5	16" PVC ENCASEMENT FOR 8" WATER REUSE LINE, EXCLUDES CARRIER PIPE, ALL DEPTHS, COMPLETE IN PLACE	LF	443	\$125.00	\$55,375.00	\$84.00	\$37,212.00	\$120.00	\$53,160.00
6	8" AWWA GATE VALVE AND BOX, COMPLETE IN PLACE	EA	7	\$1,800.00	\$12,600.00	\$1,600.00	\$11,200.00	\$2,365.00	\$16,555.00
7	12" AWWA GATE VALVE AND BOX, COMPLETE IN PLACE	EA	10	\$3,400.00	\$34,000.00	\$2,000.00	\$20,000.00	\$4,364.00	\$43,640.00
8	FLUSHING VALVE UNIT, ALL DEPTHS, INCLUDES APPROPRIATE TEE, 6" GATE VALVE & BOX, 6" LEAD, FLUSHING VALVE AND TRENCH SAFETY, COMPLETE IN PLACE	EA	12	\$7,100.00	\$85,200.00	\$8,884.00	\$106,608.00	\$8,608.50	\$103,302.00
9	DUCTILE IRON FITTINGS, COMPLETE IN PLACE	TON	2.16	\$4,300.00	\$9,288.00	\$7,884.00	\$17,029.44	\$100.00	\$216.00
10	TRENCH SAFETY SYSTEM, ALL DEPTHS, COMPLETE IN PLACE	LF	6338	\$1.00	\$6,338.00	\$1.00	\$6,338.00	\$0.10	\$633.80
11	8" PLUG & CLAMP, COMPLETE IN PLACE	EA	5	\$215.00	\$1,075.00	\$500.00	\$2,500.00	\$250.00	\$1,250.00
12	12" PLUG & CLAMP, COMPLETE IN PLACE	EA	2	\$370.00	\$740.00	\$1,000.00	\$2,000.00	\$350.00	\$700.00
13	2" BLOW OFF VALVE & BOX ASSEMBLY, COMPLETE IN PLACE	EA	7	\$535.00	\$3,745.00	\$1,200.00	\$8,400.00	\$758.50	\$5,309.50
14	REMOVE AND DISPOSE OF EXISTING 12" PLUG AND CLAMP AND CONNECT PROPOSED 12" WATERLINE, COMPLETE IN PLACE	EA	1	\$1,750.00	\$1,750.00	\$500.00	\$500.00	\$800.00	\$800.00
15	8" PVC WATER RE-USE LINE (PURPLE PIPE), C-900 DR 18, CL 235, ALL DEPTHS, COMPLETE IN PLACE	LF	3340	\$34.00	\$113,560.00	\$55.00	\$183,700.00	\$38.00	\$126,920.00
16	REMOVE AND DISPOSE OF EXISTING 8" PLUG AND CLAMP AND BLOWOFF VALVE AND CONNECT PROPOSED 8" WATER RE-USE LINE, COMPLETE IN PLACE	EA	1	\$1,500.00	\$1,500.00	\$500.00	\$500.00	\$750.00	\$750.00
17	BORE AND JACK OR AUGER (DRY BORE) OF 16" PVC CASING FOR 8" WATER RE-USE LINE, ALL DEPTHS, ALL SIZES, EXCLUDES LINE PIPE, (TO BE USED ONLY AT THE DIRECTION OF THE ENGINEER), COMPLETE IN PLACE	LF	443	\$150.00	\$66,450.00	\$150.00	\$66,450.00	\$150.00	\$66,450.00
18	BORE AND JACK OR AUGER (DRY BORE) OF 24" PVC CASING FOR 12" WATER LINE, ALL DEPTHS, ALL SIZES, EXCLUDES LINE PIPE, (TO BE USED ONLY AT THE DIRECTION OF THE ENGINEER), COMPLETE IN PLACE	LF	480	\$150.00	\$72,000.00	\$150.00	\$72,000.00	\$230.00	\$110,400.00
19	BORE PITS FOR WATER LINE BORE, INCLUDES BORE PIT, DEWATERING OF BORE PIT, TRENCH SAFETY FOR BORE PIT, & FILLED WITH 95% STANDARD PROCTOR DENSITY, COMPLETE IN PLACE	EA	20	\$250.00	\$5,000.00	\$100.00	\$2,000.00	\$100.00	\$2,000.00
WATER DISTRIBUTION SYSTEM ITEMS – SIENNA MUD NO. 7 SUBTOTAL:					\$842,119.00		\$920,985.44		\$938,351.80
SANITARY SEWER SYSTEM ITEMS – SIENNA MUD NO. 7									
1	8" PVC SEWER PIPE, ASTM D 2241, SDR 26, CLASS 160, 16'- 20' DEPTH, COMPLETE IN PLACE	LF	271	\$73.00	\$19,783.00	\$65.00	\$17,615.00	\$58.50	\$15,853.50

BID TABULATION FOR:

BID OPENING DATE:
BID OPENING LOCATION:
TABULATION BY:
TABULATION DATE:
LJA JOB NO.

CONSTRUCTION OF THE WATER, SANITARY SEWER, AND DRAINAGE FACILITIES TO SERVE SIENNA LAKES DRIVE STREET DEDICATION
 TO SERVE SIENNA LAKES DRIVE STREET DEDICATION
 SIENNA MUNICIPAL UTILITY DISTRICT NO. 7
 CITY OF MISSOURI CITY, FORT BEND COUNTY, TEXAS
 FEBRUARY 8, 2024
 LJA ENGINEERING, INC.
 C CORTEZ
 FEBRUARY 8, 2024
 1417-1601A (9.2)

ITEM	DESCRIPTION	UNIT	QTY	1) CROSTEX CONSTRUCTION INC.		2) DIMAS BROS. CONSTRUCTION		3) ISJ UNDERGROUND UTILITIES	
				UNIT COST	TOTAL COST	UNIT COST	TOTAL COST	UNIT COST	TOTAL COST
2	18" PVC SEWER PIPE, ASTM D 2241, SDR 26, CLASS 160, 12'- 16' DEPTH, COMPLETE IN PLACE	LF	1749	\$105.00	\$183,645.00	\$150.00	\$262,350.00	\$146.50	\$256,228.50
3	18" PVC SEWER PIPE, ASTM F 679, SDR 26, CLASS 160, 16'- 20' DEPTH, COMPLETE IN PLACE	LF	1845	\$120.00	\$221,400.00	\$184.00	\$339,480.00	\$146.50	\$270,292.50
4	36" PVC ENCASEMENT FOR 18" SANITARY SEWER, EXCLUDES CARRIER PIPE, ALL DEPTHS, COMPLETE IN PLACE	LF	46	\$310.00	\$14,260.00	\$300.00	\$13,800.00	\$444.00	\$20,424.00
5	BORE AND JACK OR AUGER (WET BORE) OF 36" PVC CASING FOR 18" SANITARY SEWER, ALL DEPTHS, ALL SIZES, EXCLUDES LINE PIPE, (TO BE USED ONLY AT THE DIRECTION OF THE ENGINEER), COMPLETE IN PLACE	LF	46	\$50.00	\$2,300.00	\$100.00	\$4,600.00	\$150.00	\$6,900.00
6	BORE PITS FOR SANITARY BORE, INCLUDES BORE PIT, DEWATERING OF BORE PIT, TRENCH SAFETY FOR BORE PIT, & FILLED WITH 95% STANDARD PROCTOR DENSITY, COMPLETE IN PLACE	EA	4	\$500.00	\$2,000.00	\$100.00	\$400.00	\$100.00	\$400.00
7	5' SANITARY SEWER MANHOLE, (0' - 8' DEPTH), INCLUDING INFLOW PROTECTOR AND RAMNEK AT ALL JOINTS, COMPLETE IN PLACE	EA	20	\$7,250.00	\$145,000.00	\$10,000.00	\$200,000.00	\$7,940.50	\$158,810.00
8	EXTRA VERTICAL DEPTH OF 5' DIAMETER STANDARD SANITARY SEWER MANHOLES, (OVER 8' DEPTH), COMPLETE IN PLACE	VF	168.8	\$725.00	\$122,380.00	\$384.00	\$64,819.20	\$20.00	\$3,376.00
9	8" PVC FORCEMAIN, AWWA C-900, DR-18, CLASS 235, COLOR GREEN, ALL DEPTHS, INCLUDES FITTINGS AND RESTRAINED JOINTS, AND ALL OTHER APPURTENANCES, COMPLETE IN PLACE	LF	3471	\$40.00	\$138,840.00	\$54.00	\$187,434.00	\$42.50	\$147,517.50
10	16" PVC ENCASEMENT FOR 8" FORCEMAIN, EXCLUDES CARRIER PIPE, ALL DEPTHS, COMPLETE IN PLACE	LF	57	\$110.00	\$6,270.00	\$84.00	\$4,788.00	\$115.50	\$6,583.50
11	BORE AND JACK OR AUGER (DRY BORE) OF 16" PVC CASING FOR 8" FORCEMAIN, ALL DEPTHS, ALL SIZES, EXCLUDES LINE PIPE, (TO BE USED ONLY AT THE DIRECTION OF THE ENGINEER), COMPLETE IN PLACE	LF	57	\$200.00	\$11,400.00	\$200.00	\$11,400.00	\$200.00	\$11,400.00
12	REMOVE AND DISPOSE OF EXISTING 8" PLUG AND CLAMP AND CONNECT PROPOSED 8" FORCEMAIN, COMPLETE IN PLACE	EA	1	\$1,500.00	\$1,500.00	\$500.00	\$500.00	\$500.00	\$500.00
13	8" PLUG AND CLAMP FOR FORCEMAIN, COMPLETE IN PLACE	EA	1	\$1,000.00	\$1,000.00	\$250.00	\$250.00	\$600.00	\$600.00
14	APCO 200 AIR RELEASE VALVE AND STRUCTURE FOR FORCEMAIN, ALL SIZES, ALL DEPTHS, INCLUDES FITTINGS AND ALL OTHER APPURTENANCES, COMPLETE IN PLACE	EA	2	\$15,000.00	\$30,000.00	\$6,000.00	\$12,000.00	\$21,159.00	\$42,318.00
15	T.V. INSPECTION OF SANITARY SEWER LINES (TO BE USED ONLY AT THE WRITTEN DIRECTION OF THE ENGINEER), COMPLETE IN PLACE	LF	3865	\$2.00	\$7,730.00	\$2.00	\$7,730.00	\$2.00	\$7,730.00
16	TRENCH SAFETY SYSTEM, ALL DEPTHS, ALL SIZES, COMPLETE IN PLACE	LF	7233	\$1.00	\$7,233.00	\$1.00	\$7,233.00	\$0.10	\$723.30
17	FINAL ADJUSTMENTS TO SANITARY MANHOLES, COMPLETE IN PLACE	EA	20	\$150.00	\$3,000.00	\$100.00	\$2,000.00	\$250.00	\$5,000.00
18	8" SANITARY SEWER PLUG, COMPLETE IN PLACE	EA	4	\$100.00	\$400.00	\$500.00	\$2,000.00	\$100.00	\$400.00
19	18" SANITARY SEWER PLUG, COMPLETE IN PLACE	EA	2	\$500.00	\$1,000.00	\$1,500.00	\$3,000.00	\$2,000.00	\$4,000.00
20	CORE INTO EXISTING 5' MANHOLE AND CONNECT PROPOSED 18" SANITARY SEWER, INCLUDES NECESSARY DROP STRUCTURE, ANY AND ALL APPURTENANCES, COMPLETE IN PLACE	EA	1	\$3,000.00	\$3,000.00	\$1,500.00	\$1,500.00	\$3,985.50	\$3,985.50
21	CONTRACTOR TO GROUT AND ABANDON EXISTING 12" SANITARY LINE, ALL DEPTHS, COMPLETE IN PLACE	LF	38	\$50.00	\$1,900.00	\$250.00	\$9,500.00	\$60.00	\$2,280.00
22	STANDARD SANITARY SEWER DROP STRUCTURE, AS PER CITY OF MISSOURI CITY STANDARDS, COMPLETE IN PLACE	EA	1	\$850.00	\$850.00	\$1,000.00	\$1,000.00	\$6,519.00	\$6,519.00

BID TABULATION FOR:

BID OPENING DATE:
BID OPENING LOCATION:
TABULATION BY:
TABULATION DATE:
LJA JOB NO.

CONSTRUCTION OF THE WATER, SANITARY SEWER, AND DRAINAGE FACILITIES TO SERVE SIENNA LAKES DRIVE STREET DEDICATION
 TO SERVE SIENNA LAKES DRIVE STREET DEDICATION
 SIENNA MUNICIPAL UTILITY DISTRICT NO. 7
 CITY OF MISSOURI CITY, FORT BEND COUNTY, TEXAS
 FEBRUARY 8, 2024
 LJA ENGINEERING, INC.
 C CORTEZ
 FEBRUARY 8, 2024
 1417-1601A (9.2)

ITEM	DESCRIPTION	UNIT	QTY	1) CROSTEX CONSTRUCTION INC.		2) DIMAS BROS. CONSTRUCTION		3) ISJ UNDERGROUND UTILITIES	
				UNIT COST	TOTAL COST	UNIT COST	TOTAL COST	UNIT COST	TOTAL COST
23	EXTRA VERTICAL DEPTH OF STANDARD SANITARY SEWER DROP STRUCTURE, AS PER CITY OF MISSOURI CITY STANDARDS, COMPLETE IN PLACE	VF	4.09	\$85.00	\$347.65	\$15.00	\$61.35	\$100.00	\$409.00
SANITARY SEWER SYSTEM ITEMS – SIENNA MUD NO. 7 SUBTOTAL:					\$925,238.65		\$1,153,460.55		\$972,250.30
DRAINAGE FACILITIES ITEMS –SIENNA MUD NO. 7									
1	24" R.C.P. STORM SEWER, ASTM C-76, CLASS III, ALL DEPTHS, COMPLETE IN PLACE	LF	1384	\$88.00	\$121,792.00	\$101.00	\$139,784.00	\$134.00	\$185,456.00
2	30" R.C.P. STORM SEWER, ASTM C-76, CLASS III, ALL DEPTHS, COMPLETE IN PLACE	LF	122	\$111.00	\$13,542.00	\$118.00	\$14,396.00	\$194.00	\$23,668.00
3	36" R.C.P. STORM SEWER, ASTM C-76, CLASS III, ALL DEPTHS, COMPLETE IN PLACE	LF	421	\$151.00	\$63,571.00	\$155.00	\$65,255.00	\$186.50	\$78,516.50
4	42" R.C.P. STORM SEWER, ASTM C-76, CLASS III, ALL DEPTHS, COMPLETE IN PLACE	LF	516	\$199.00	\$102,684.00	\$195.00	\$100,620.00	\$167.50	\$86,430.00
5	48" R.C.P. STORM SEWER, ASTM C-76, CLASS III, ALL DEPTHS, COMPLETE IN PLACE	LF	559	\$238.00	\$133,042.00	\$225.00	\$125,775.00	\$271.00	\$151,489.00
6	STAGE I - STANDARD 10' CURB INLET, ALL DEPTHS, (INCLUDES TEMPORARY SILT BARRIER FENCE FOR STAGE I INLETS), COMPLETE IN PLACE	EA	10	\$3,000.00	\$30,000.00	\$1,500.00	\$15,000.00	\$4,861.50	\$48,615.00
7	STAGE II - STANDARD 10' CURB INLET, (INCLUDES TEMPORARY SAND-FILLED BURLAP BAGS FOR EROSION AND SEDIMENT CONTROL), COMPLETE IN PLACE	EA	10	\$1,250.00	\$12,500.00	\$2,000.00	\$20,000.00	\$3,009.00	\$30,090.00
8	STAGE I - STANDARD 5' PRECAST INLET ("H-2"), ALL DEPTHS, (INCLUDES TEMPORARY SILT BARRIER FENCE FOR STAGE I INLETS), COMPLETE IN PLACE	EA	14	\$2,000.00	\$28,000.00	\$1,200.00	\$16,800.00	\$1,931.00	\$27,034.00
9	STAGE II - STANDARD 5' PRECAST INLET ("H-2"), (INCLUDES TEMPORARY SAND-FILLED BURLAP BAGS FOR EROSION AND SEDIMENT CONTROL), COMPLETE IN PLACE	EA	14	\$1,100.00	\$15,400.00	\$1,800.00	\$25,200.00	\$2,296.00	\$32,144.00
10	TYPE "C" MANHOLE FOR 42" STORM SEWER AND SMALLER, ALL DEPTHS, COMPLETE IN PLACE	EA	16	\$3,900.00	\$62,400.00	\$3,184.00	\$50,944.00	\$5,153.50	\$82,456.00
11	TYPE "C" MANHOLE FOR 48" STORM SEWER AND LARGER, ALL DEPTHS, COMPLETE IN PLACE	EA	4	\$8,000.00	\$32,000.00	\$4,884.00	\$19,536.00	\$8,091.00	\$32,364.00
12	JUNCTION BOX WITH TYPE "C" MANHOLE PER DETAIL, ALL DEPTHS, COMPLETE IN PLACE	EA	7	\$25,000.00	\$175,000.00	\$18,884.00	\$132,188.00	\$15,349.50	\$107,446.50
13	5' X 5' R.C.P. STORM SEWER, ASTM C-76, CLASS III, ALL DEPTHS, COMPLETE IN PLACE	LF	305	\$610.00	\$186,050.00	\$550.00	\$167,750.00	\$684.50	\$208,772.50
14	6' X 6' R.C.P. STORM SEWER, ASTM C-76, CLASS III, ALL DEPTHS, COMPLETE IN PLACE	LF	10	\$790.00	\$7,900.00	\$684.00	\$6,840.00	\$903.50	\$9,035.00
15	7' X 5' R.C.P. STORM SEWER, ASTM C-76, CLASS III, ALL DEPTHS, COMPLETE IN PLACE	LF	112	\$860.00	\$96,320.00	\$799.00	\$89,488.00	\$984.00	\$110,208.00
16	7' X 7' R.C.P. STORM SEWER, ASTM C-76, CLASS III, ALL DEPTHS, COMPLETE IN PLACE	LF	107	\$975.00	\$104,325.00	\$884.00	\$94,588.00	\$1,126.00	\$120,482.00
17	24" CORRUGATED GALVANIZED METAL PIPE SEWER, FOR OUTFALL, 14 GAUGE, ASTM A-760 STANDARD, ALL DEPTHS, COMPLETE IN PLACE	LF	16	\$105.00	\$1,680.00	\$155.00	\$2,480.00	\$130.00	\$2,080.00

BID TABULATION FOR:**BID OPENING DATE:****BID OPENING LOCATION:****TABULATION BY:****TABULATION DATE:****LJA JOB NO.**

CONSTRUCTION OF THE WATER, SANITARY SEWER, AND DRAINAGE FACILITIES TO SERVE SIENNA LAKES DRIVE STREET DEDICATION
TO SERVE SIENNA LAKES DRIVE STREET DEDICATION
SIENNA MUNICIPAL UTILITY DISTRICT NO. 7
CITY OF MISSOURI CITY, FORT BEND COUNTY, TEXAS
FEBRUARY 8, 2024
LJA ENGINEERING, INC.
C CORTEZ
FEBRUARY 8, 2024
1417-1601A (9.2)

ITEM	DESCRIPTION	UNIT	QTY	1) CROSTEX CONSTRUCTION INC.		2) DIMAS BROS. CONSTRUCTION		3) ISJ UNDERGROUND UTILITIES	
				UNIT COST	TOTAL COST	UNIT COST	TOTAL COST	UNIT COST	TOTAL COST
18	CITY OF MISSOURI CITY (COMC) CONSTRUCTION PERMIT FOR CONSTRUCTION OF WS&D (PERCENTAGE OF WS&D CONSTRUCTION COST AS REQUIRED BY COMC), COMPLETE IN PLACE	LS	1	\$36,388.35	\$36,388.35	\$52,350.00	\$52,350.00	\$27,300.00	\$27,300.00
19	TRENCH SAFETY SYSTEM, ALL DEPTHS, COMPLETE IN PLACE	LF	3552	\$1.00	\$3,552.00	\$1.00	\$3,552.00	\$0.10	\$355.20
20	WATER, SANITARY SEWER, AND STORM SEWER UTILITY SPOIL TO BE HAULED 0.5 MILES TO FILL SITE, INCLUDES EXCAVATION, HAULING, PLACED AND COMPACTED TO 95% STANDARD PROCTOR DENSITY WITH MAXIMUM 8" LIFTS, COMPLETE IN PLACE	CY	15349	\$6.00	\$92,094.00	\$3.00	\$46,047.00	\$9.00	\$138,141.00
21	FINAL ADJUSTMENT OF MANHOLE RIM ELEVATIONS, COMPLETE IN PLACE	EA	27	\$150.00	\$4,050.00	\$100.00	\$2,700.00	\$250.00	\$6,750.00
22	OVERFLOW DRAINAGE SWALE, CHANNEL LOCK OR APPROVED EQUAL, 3:1 SIDE SLOPES, 3' BOTTOM WIDTH, INCLUDES EXCAVATION HAULING, GRADING AND HYDROMULCH SEEDING AS PER SWMHCA SPECIFICATION NO. 4241 (TO BE USED ONLY AS DIRECTED BY THE ENGINEER), COMPLETE IN PLACE	LF	112	\$35.00	\$3,920.00	\$84.00	\$9,408.00	\$65.00	\$7,280.00
23	PROPOSED DRAINAGE SWALE, 3:1 SIDE SLOPES, 7' BOTTOM WIDTH, INCLUDES HAULING, GRADING AND HYDROMULCH SEEDING AS PER SWMHCA SPECIFICATION NO. 4241 (TO BE USED ONLY AS DIRECTED BY THE ENGINEER), SPOIL TO BE SIDE CAST ADJACENT TO SWALE, STOCKPILE TO HAVE 4:1 SIDE SLOPES, COMPLETE IN PLACE	CY	38380	\$4.00	\$153,520.00	\$4.00	\$153,520.00	\$1.00	\$38,380.00
24	INSTALLATION AND REMOVAL OF STABILIZED CONSTRUCTION EXIT, SWMHCA SPECIFICATION NO. 4711, INCLUDES INSTALLATION AND REMOVAL (TO BE USED ONLY AS DIRECTED BY THE ENGINEER), COMPLETE IN PLACE	EA	1	\$1,500.00	\$1,500.00	\$1,500.00	\$1,500.00	\$1,500.00	\$1,500.00
25	PROPOSED DRAINAGE SWALE, 3:1 SIDE SLOPES, 2' BOTTOM WIDTH, INCLUDES HAULING, GRADING AND HYDROMULCH SEEDING AS PER SWMHCA SPECIFICATION NO. 4241 (TO BE USED ONLY AS DIRECTED BY THE ENGINEER), SPOIL TO BE SIDE CAST ADJACENT TO SWALE, STOCKPILE TO HAVE 4:1 SIDE SLOPES, COMPLETE IN PLACE	CY	7518	\$4.00	\$30,072.00	\$4.00	\$30,072.00	\$1.00	\$7,518.00
26	4' CONCRETE SPLASH PAD WITH 2' TOE WALL AT FLOWLINE OF PROPOSED STORM SEWER, COMPLETE IN PLACE	EA	2	\$3,000.00	\$6,000.00	\$5,000.00	\$10,000.00	\$7,500.00	\$15,000.00
27	8" BRICK PLUG FOR STORM SEWER, ALL SIZES, ALL DEPTHS, COMPLETE IN PLACE	EA	5	\$500.00	\$2,500.00	\$200.00	\$1,000.00	\$800.00	\$4,000.00
28	CLEARING AND GRUBBING OF HEAVILY WOODED FILL AREA, INCLUDES REMOVING ALL STUMPS AND ROOTS, CHIPPING AND HAULING OF DEBRIS OUTSIDE THE BOUNDARY OF THE THE SIENNA DEVELOPMENT, (ONLY AS DIRECTED BY THE ENGINEER), COMPLETE IN PLACE	AC	8.68	\$13,000.00	\$112,840.00	\$8,000.00	\$69,440.00	\$20,000.00	\$173,600.00
DRAINAGE FACILITIES ITEMS –SIENNA MUD NO. 7 SUBTOTAL:					\$1,632,642.35		\$1,466,233.00		\$1,756,110.70
ALTERNATE BID NO. 1 - WS&D FIELD CONDITIONS ITEMS									
1	BORE AND JACK OR AUGER (WET BORE) OF WATER LINE, ALL DEPTHS, ALL SIZES, EXCLUDES LINE PIPE, (TO BE USED ONLY AT THE DIRECTION OF THE ENGINEER), COMPLETE IN PLACE	LF	100	\$50.00	\$5,000.00	\$50.00	\$5,000.00	\$50.00	\$5,000.00
2	BORE PITS FOR WATER LINE BORE, INCLUDES BORE PIT, DEWATERING OF BORE PIT, TRENCH SAFETY FOR BORE PIT, COMPLETE IN PLACE	EA	2	\$250.00	\$500.00	\$100.00	\$200.00	\$100.00	\$200.00
3	BORE AND JACK OR AUGER (WET BORE) OF SANITARY SEWER, ALL DEPTHS, ALL SIZES, EXCLUDES LINE PIPE, (TO BE USED ONLY AT THE DIRECTION OF THE ENGINEER), COMPLETE IN PLACE	LF	100	\$50.00	\$5,000.00	\$50.00	\$5,000.00	\$50.00	\$5,000.00

BID TABULATION FOR:

BID OPENING DATE:
BID OPENING LOCATION:
TABULATION BY:
TABULATION DATE:
LJA JOB NO.

CONSTRUCTION OF THE WATER, SANITARY SEWER, AND DRAINAGE FACILITIES TO SERVE SIENNA LAKES DRIVE STREET DEDICATION
TO SERVE SIENNA LAKES DRIVE STREET DEDICATION
SIENNA MUNICIPAL UTILITY DISTRICT NO. 7
CITY OF MISSOURI CITY, FORT BEND COUNTY, TEXAS
FEBRUARY 8, 2024
LJA ENGINEERING, INC.
C CORTEZ
FEBRUARY 8, 2024
1417-1601A (9.2)

ITEM	DESCRIPTION	UNIT	QTY	1) CROSTEX CONSTRUCTION INC.		2) DIMAS BROS. CONSTRUCTION		3) ISJ UNDERGROUND UTILITIES	
				UNIT COST	TOTAL COST	UNIT COST	TOTAL COST	UNIT COST	TOTAL COST
4	BORE PITS FOR SANITARY SEWER BORE, INCLUDES BORE PIT, DEWATERING OF BORE PIT, TRENCH SAFETY FOR BORE PIT, COMPLETE IN PLACE	EA	2	\$500.00	\$1,000.00	\$100.00	\$200.00	\$100.00	\$200.00
5	DEWATERING OF RIGHT OF WAY (ALL DEPTHS, THIS IS AN ESTIMATED QUANTITY TO BE USED ONLY AT THE WRITTEN DIRECTION OF THE ENGINEER), COMPLETE IN PLACE	LF	3823	\$20.00	\$76,460.00	\$20.00	\$76,460.00	\$20.00	\$76,460.00
6	CEMENT STABILIZED SAND (TO BE USED ONLY AS DIRECTED BY THE ENGINEER), COMPLETE IN PLACE	CY	500	\$50.00	\$25,000.00	\$50.00	\$25,000.00	\$50.00	\$25,000.00
7	ADDITIONAL COST FOR MISSOURI CITY MODIFIED "A-A" SANITARY SEWER BEDDING, (TO BE USED ONLY AS DIRECTED BY THE ENGINEER), COMPLETE IN PLACE	LF	3594	\$12.00	\$43,128.00	\$12.00	\$43,128.00	\$12.00	\$43,128.00
8	ADDITIONAL COST FOR MISSOURI CITY MODIFIED "A-A" STORM SEWER BEDDING, (TO BE USED ONLY AS DIRECTED BY THE ENGINEER), COMPLETE IN PLACE	LF	229	\$16.00	\$3,664.00	\$16.00	\$3,664.00	\$16.00	\$3,664.00

ALTERNATE BID NO. 1 - WS&D FIELD CONDITIONS ITEMS SUBTOTAL:

\$159,752.00 **\$158,652.00** **\$158,652.00**

BIDDING SUMMARY

SUBTOTAL WATER DISTRIBUTION SYSTEM ITEMS – SIENNA MUD NO. 7	\$842,119.00	\$920,985.44	\$938,351.80
SUBTOTAL SANITARY SEWER SYSTEM ITEMS – SIENNA MUD NO. 7	\$925,238.65	\$1,153,460.55	\$972,250.30
SUBTOTAL DRAINAGE FACILITIES ITEMS –SIENNA MUD NO. 7	\$1,632,642.35	\$1,466,233.00	\$1,756,110.70
TOTAL AMOUNT BASE BID	\$3,400,000.00	\$3,540,678.99	\$3,666,712.80

ALTERNATE BID NO. 1 - WS&D FIELD CONDITIONS ITEMS

TOTAL AMOUNT BASE BID	\$3,400,000.00	\$3,540,678.99	\$3,666,712.80
SUBTOTAL ALTERNATE BID NO. 1 - WS&D FIELD CONDITIONS ITEMS	\$159,752.00	\$158,652.00	\$158,652.00
TOTAL AMOUNT INCLUDING ALTERNATE BID NO. 1 - WS&D FIELD CONDITIONS ITEMS	\$3,559,752.00	\$3,699,330.99	\$3,825,364.80